

NKỌWA NNOCHI NA ỤDỊ YA GA N'ASỤSỤ IGBO

Si N'Aka

Aloysius Udosinachi Umeodinka (PhD)
Department of Igbo, African & Asian Studies,
Faculty of Arts,
Nnamdi Azikiwe University,
Awka.

Phone: 08039563380

Email: au.umeodinka@unizik.edu.ng/ ; maloyudo@gmail.com

Ụmị edemede

Edemede a bụ nke nchọcha. Isi okwu ya bụ “Nkọwa Nnọchi Na Ụdị Ya Ga N’Asụsụ Igbo”. Nchọcha a, n’etu e menubeghị na mbụ, bụ nke kpebiri iji asụsụ Igbo nyochaa “Nkọwa Nnọchi” n’asụsụ Igbo. Otu n’ime ebmunuche ndị kpalitere nchọcha a bụ ikọwa ihe bụ nkọwa nnọchi. Ebmunuche ọzọ bụ ichọpụta njirimara ndokọ okwu ya. Ebmunuche nke atọ bụ ichọpụta ụdị nkọwa nnọchi dị iche iche e nwere n’asụsụ Igbo. Usoro nchọcha anyị na-agbaso bụ nke nkọwa. Atụtụ anyị ji eme ya bụ Atụtụ Usoro okwu. Nchọpụta nke mbụ na-akọwa na ihe bụ nkọwa nnọchi bụ ofu aha ma ọ bụ nkebi okwu keaha, nke na-esote aha iji gosị ya, gwa anyị okwu gbasara ya, ya bụ, ikọwa ya. Gbasara njirimara ndokọ okwu nkọwa nnọchi, anyị na-achọpụta na nkọwa nnọchi nọ ọdụ ka nkọwa aha nkebi ahịrị dị mfe. Ndokọ ya nwere ihe ndị na-egosi nkọwa nnọchi. ọzọ, na ndokọ nkọwa nnọchi, mmebere ya niile na-arutụ aka n’ibe ha. Ndokọ okwu ya bụ nke ihe ndị mebere ya na-enye nzirita ozi, na-emekwa nkwurukwasa. N’igbado ụkwu n’usoro okwu, anyị na-achọpụta na ụdị nkọwa nnọchi e nwere n’asụsụ Igbo gunyere ndị a: kengawanye, kengadebe, keahịrị okwu, kemkpuru okwu, kempekele, kenkwughari aha, kenkebi okwu, kenkebi ahịrị, kennororonwe na keanoroghị onwe.

1.0 Okwu mmalite

Na grama Igbo, e nwere ahịrị mfe. Nke a bụ ahịrị okwu na-enwe naanị otu ngwaa, nke na-egosi naanị otu echiche na nghọta. Ụdị ahịrị okwu a anaghị ezitenwu nnukwu ozi n’asụsụ, tumadị ebe metụtara ndị ọrụ ha bụ izirita ozi na nzisa ozi. N’ihi mperi a o riri, ọ buru na e tinye imerime ahịrị mfe n’ederede na-etinyesoghị ya ezigbo nkọwa, ọ na-eme ka ederede ahụ ghara itọ uto, mee ya ọ dị ka ederede ụmụ aka dere.

Ezigbo ederede na-adị mma ka ọ hapu ibụ otu ụdị ahịrị okwu, n’ihi na otu ụdị ahịrị okwu anaghị eghe eghe. Ọ naghị enwe ngwako, nke ahịrị okwu kara aka na-enwe; ọ naghị enwe ụdị uto ahụ e jiri mara ahịrị okwu chapuru achapu. Ụdị ahịrị okwu ahụ na-atọ mmiri mmiri. Ọ naghị egosi ahịrị okwu e ji aka ochie, aka mmuta, wee dee. Ọ na-abụ nnukwu nsogbu n’ederede Igbo. Ọ bụ n’ihi nsogbu dị etu a, tumadị na nzirita ozi, ka e ji achọ ikwalite ụdị ahịrị okwu e ji ede ederede ka ọ na-enye ugwu ma na-enwe ọtụtụ echiche na nghọta n’ime ya.

Otu n’ime ụzọ e si akwalite ahịrị okwu ka o buru ọtụtụ echiche, nghọta na nkọwa bụ site n’iji ahịrị okwu nwere nkọwa nnọchi, nke ndị Bekee na-akpọ “apposition”. ọ dị

mma ka ndi mmadu mara maka udi okwu a n'asusu Igbo. O bu ya mere anyi ji choo ime nchocha na ya. Isi okwu nchocha a bu "Nkwa nnochi Na udi Ya N'Asusu Igbo". Ebumnuche nchocha a di ato. Nke mbu bu ikwa ihe bu "Nkwa nnochi" n'asusu Igbo. Nke abuo bu ichoputa njirimara usoro okwu nkwa nnochi. Nke ato bu igbado ukwu n'usoro okwu wee choputa udi nkwa nnochi e nwegasiri n'asusu Igbo.

Usoro anyi ji eme nchocha a bu usoro nkwa. Atutu na-eduzi anyi uzo anyi si eme ya bu Atutu Ndokokwu, nke Ferdinand de Saussure weputara n'afu, 1916.

Na nhazi edemede nchocha a, anyi kewara usoro anyi ga-esi me ya uzo ano. Nkebi nke mbu bu maka okwu mmalite. o bu ebe a ka anyi ga-ekwu okwu mmalite ga-eji nwayoo dubanye oguu tumadi n'ihe kpatara anyi ji eme nchocha n'isi okwu a. Nke a gasia, anyi abanye na nkebi nke abuo. Nkebi nke abuo bu maka Ntuleghari Agumagu. O bu na ya ka anyi ga-eweputa ihe ndi mmadu derela n'akwukwo di iche iche banyere isiokwu a. Anyi tulegharichaa echemeche ha, anyi esi na ya nweta mkpebi ga maka nchoputa nchocha. O bu ntucha nchoputa nchocha a ka anyi ga-eme maka ya n'isi nke ato. Anyi mesia ntucha nchoputa nchocha, anyi abanyezie na nkebi nke ikpezu, nkebi nke ano, ebe anyi ga-eme nchikota nchoputa nchocha, wee kwuo okwu mmechi.

Olile anya anyi bu na edemede nchocha a ga-aba uru n'uto asusu Igbo. O ga-akwalite asusu Igbo n'uzo nke ya, mekwa ka nchocha a buru ebe mgbakwasa ukwu maka nchocha ndi ga-abia n'odinihu. Mmuta ga-esi na ya aputa ga-abara ndi oru nta akuko na oru nzirita ozi nnukwu uru n'ide ederede.

2.0 Ntuleghari Agumagu

Ntuleghari agumagu ka anyi na-eme na nkebi a. Nkebi a ka anyi weputara maka ituleghari ederede na agumagu ndi metutara isi okwu nchocha a.

2.1 Asusu

Crystal (1991) na-ekwu na e nwere ike isi n'uzo di iche iche kowa ihe bu asusu. N'okwu ya, nkwa nke kachara puta ihe bu na asusu na-arutu aka n'ikwu okwu, ide ihe na iji akara gwa mmadu okwu. o na-ahutakwa asusu di ka usoro ebituaka nke metutara nchikota akparamagwa ikwu okwu na ide ihe nke bu njirimara agburu ma o bu obodo.

Na nkwa nke ya, Prasad (2014) na-enye nkwa asusu di ka okpurukpu ebe mmadu na ibe ya si ekwukorita okwu, ezikorita, na-egosiputa echiche obi ha. N'okwu ya, e nwere uzo nzirita ozi di ka igba egwu, iti egwu, iru aka, iji odimara na ihe ndi ozo. N'agbanyeghi ndi a, Prasad (2014) na-ekwu na o bu asusu bu uzo nzirita ozi ruru onye o bula aka. o bu site n'asusu ka mmepe na imuta ihe ohuru si abia. Echebima (2015) si n'ihe mmadu ji asusu eme were akwa ya. o na-ekwu na mmadu bu onye mmekojita na-ato uto, nke mere o ji eji asusu enwe nzirita ozi mmadu na ibe ya. o na-ekwuzi na nzirita ozi a nwere ike ibu nke okwu onu na nke abughi site n'okwu onu. Asusu bu usoro ndi mmadu meputara iji na-ezikorita ozi, egosi echiche obi ha, mmetuta obi, ihe ha choro site n'iji odimara ederede na ekwurekwu (Anagbogu, Eme & Maha, 2010). Ofili, Chukwu na Anozie (2012) si n'aka Crystal (1972) akwa ihe bu asusu na oru ya. o na-ekwu na asusu bu olu mmadu, burukwa nke na-enwe nghota ma a hazie ya ahazie, ma baa uru n'ikparita ka. Na nkwa ya, asusu no odu ka ihe na-enye obodo niile ndu, maka na o nweghi ihe a na-eme n'elu uwa achoghi asusu.

Okwu Crystal (1991), Prasad (2014), Echebima (2015), Anagbogu, Mbah na Eme (2010) na Ofili, Chukwu na Anozie (2012) na-arutukorita aka n'uru asusu baara mmadu: akparamagwa ikwu okwu, izikorita ozi, ikparita uka, itughari echiche na ime ihe niile a na-eme n'obodo. O bu naani Anagbogu, Mbah na Eme (2010) na Ofili, Chukwu na Anozie (2012) na-ekwu maka ihazi asusu na ebe asusu si aputa tupu e tinyewe ya n'ibara mmadu uru. N'ezie asusu bu mmadu meputara ya maka igbo mkpa di iche iche; ya bu, asusu bu nnukwu ihe a naghị ebity aka, bara uru na ndu mmadu.

2.2. The Ndi Yitere Nkwa Nnchi

N'asusu Igbo, e nwere ihe ndi yitere nkwa nnchi. O bu ihe ndi ahụ ka anyi natuleghari n'ebe a. Ihe ndi ahụ bu: nkwa aha, nruaka, nnchi aha onwunwe, mkpokota/nziole, onugogu, nkebi ahiri kenkwa (relative clause).

2.2.1 Nkwa aha

Nkwa aha bu nkeji asusu e ji ekwuwaputa (akwa) aha ma o bu nnchi aha (Hodges and Whitten, 1982). Na nkwa si n'aka Ezeomeke (2004), ihe o na-akpo nkwa aha bu nkwa, wee na-enye ojii, ocha, oma, ukwu, ajo (ojoo, ojo) na nta, di ka omuma atu ya. Umeodinka, Ugochukwu, Ogwudile na Ilechukwu (2019: 68) na-ekwu na "nkwa aha, n'Igbo, na-akwara anyi maka aha. Ha na-akwa na nkwa aha na-esogide aha o na-akwa ozigbo n'asusu Igbo". Na nkwa aha anaghi ekwe ka mkpuru okwu ozo nochibido aha o na-akwa; o naghị eso 'di' bu ngwaa. o buru na o nwee mkpuru okwu na-eso "di", a mara na o bu aha ma o bu aha nkwa. Ha nyere omuma atu nkwa aha n'ahiri okwu ndi a:

omuma atu (1) (a) E ji okuko ojii achu aja, (b) Mmadu ojoo ka o bu , (ch)okuko ocha ahụ anwuola, (d) ulo nta nne nwere ime ulo ato. N'ebe a, mkpuru okwu ndi a kara ihe bu nkwa aha: ojii, ojoo, ocha na nta. Ihe nkwa ndi a na-egosi bu okwu o bula na-esote aha, ma na-akwakwa aha ahụ, na-enweghi okwu nochiri ya, bu nkwa aha. Ndi a kara ihe bu nkwa aha.

2.2.2 Nru aka

Nru aka bu mkpuru okwu ndi na-egosi ma o bu na-arutu aka kpomkwem n'ihe o na-ekwu maka ya. Uba-Mgbemena (2006) na-akwa na okwu ndi a bu nru aka di udi ato n'Igbo: "a", "ahu" na "nuhu". Na Bekee, quirk na Greenbaum (1981) na-akwa na e nwere nru aka e ji ekwu maka ihe di nso (this – na Bekee) nwee nke e ji ekwu maka ihe di n'ote aka ("that" – na Bekee). N'Igbo kwa, e ji "a" arutu aka n'ihe di nso, were "ahu" na-arutu aka n'ihe di ebe tere aka (ebe di anya). Umeodinka, Ugochukwu, Ogwudile na Ilechukwu (2019) na-adonye ukwu na nkwa a quirkna Greenbaum (1981) na Uba-Mgbemena (2006) na-enye. Naani Uwalaka (1996: 97) na-akpo ya aha di iche, "Ntu aka". omuma atu (2): (a) Iko a (this cup) (b) Ewu ahụ (that goat) (ch) Okwu ahụ (that matter) (d) Ego a (this money)

Uba-Mgbemena (2006) gara n'ihu na-akwa na "Nuhu" na-aru aka n'ihe di n'ote aka, ma na-arukwa aka n'ihe onye a na-agwa okwu mabu gbasara ya. omuma atu (3): (a) Oche a ka oche nuhu mma (This chair is better than that chair) (b) Nkita nuhu na-ayi ara (That dog is mad)

2.2.3 Nnọcha aha Nke Onwunwe

Uba-Mgbemena (2006) na-akọwa na asụsụ Igbo nwere nnọchi aha isii ndị a: /m/, /anyi/, /gi/, /unu/, /ya/ na /ha/ e ji egosị onwunwe; ya bụ, onye nwe ihe. Nnọchi aha onwunwe ndị ahụ bụkwa nke nkọwa. Etu nnọchi aha keonwunwe si esonye n'ahiri okwu bụ mgbe aha ha na-akọwa gatasiri. Na nkọwa Uba-Mgbemena (2006: 35), “ha nwere ike isote ozigbo tupu ngu (numeral) esote, ma o bụ sote mgbe ngu gatasiri”. Ọmụma atụ (4): (a) Ụlọ anyị atọ gbara oku (The three houses belonging to three of us were gutted by fire). (b) Ụlọ atọ anyị gbara oku. (Our three houses were burnt) Ekeulu (2009) na-akpọ ụdị nnọchi aha a “Nkeonye/Nnwee” (pronominal modifier). o na-asị na e ji ya arụta aka n'onwunwe ihe. Ọmụma atụ (5): (a) Ọgụ m ka o ji (He has my hoe) (b) Ụmụ ya gara akwụkwọ (His children went to school) (ch) Ndu gi agwula (Your life is finished)

2.2.4 Mkpokota/Nziole

Emenanjo (1978) na-akọwa na o bụ etu nkọwa aha na nru aka si arụ ọrụ ikọwa aha ka mkpokota/Nziole si eme nke ya, n'ụdị nke ya. O na-ekwu na mkpokota abughi mkpuru okwu a na-eji naani ya asụ asụsụ; o naghikwanu abụ isi nkebi okwu keaha. Okwu ndi bụ mkpokota bụ: dum (all), naabo (two), niile/niine (all). Ọmụma atụ (6): (a) Ha naabo dum (The two of them) (b) Ha niile dum (All of them) (ch) Ụlọ ọma naabo ahụ (Those two beautiful buildings) (d) Ụlọ ọma ahụ naabo (Two of those beautiful buildings).

Dị ka Umeodinka (2011) si akọwa, mkpuru okwu ndi a bụcha ụdị mkpokota di iche iche: ole na ole/ufodu (some), otutu (many), imirikiti/imerime (so many), ncha/chaachaa (nothing), naabo (two), naato (three), naano (four). Uwalaka (1996) na-akwado na e nwere ndi a niile n'Igbo.

2.2.5 Onuogu

Onuogu sokwa aru oru ikowa aha n'Igbo. Greenbaum (1996) na-ekwu na onuogu di uzọ atọ: kenomba (cardinal), nombanke (ordinals) na nomba mpekele (fractions). Ha na-enye aka n'ikowa aha (Umeodinka, 2011). Ọmụma atụ (7): (a) Udo kwunyere nde naira n'ulo aku (Udo paid one million naira into a bank) (b) Ike luru nwaanyi abuo (Ikem married two wives) (ch) Chiemerie gbara onye nke mbu n'ule ha. (Chiemerie came first in their eum) (d) Ada nyere Ngozi okara out ogbe oroma. (Ada gave Ngozi half of an orange).

2.2.6 Nkebi ahiri Kenkwa (Relative Clause)

N'ikowa nkebi ahiri kenkwa, Murthy (2007) na-ekwu na nkebi ahiri kenkwa bu ukwu mkpuru okwu bu alaka ahiri okwu ma nwekwaa isi ahiri na okwuputa. N'akuku nke ya, Uba-Mgbemena (2006) na-akowa nkebi ahiri kenkwa di ka nkebi ahiri ndabere (nnonokpuru) nke na-akowara anyi aha di n'ahiri okwu. o bu nkebi ahiri nnonokpuru nke na-aru oru ka nkowa aha. Uba-Mgbemena (2006) gara n'ihu gbado ukwu na usoro okwu wee na-ekwu na nkebi ahiri kenkwa di udi abuo – nke na-akowa isi ahiri na nke na-akowa nnara. Ihe o putara bu na nkebi ahiri kenkwa nwere nke na-akowa isi ahiri nwekwaa nke na-akowa nnara ahiri okwu ahụ. Ọmụma atụ (8): (a) Nwoke gburu odum bu odogwu. (The man who killed the lion is a hero) (b) Ụlọ Uche ruru mara mma. (The house built by Uche is fine)

Site n’ihe ọ na-akọwa, n’ahiri okwu (a) n’elu na-egosi na “gburu ọdum” na-akọwa “nwoke”, nke bu isi ahiri n’ahiri okwu ahụ. Etu a ka ọ di na (b), ebe “Uche ruru”, nke bu isi ahiri nke nkebi okwu keaha, “ulo mara mma”.

Site na ntuleghari ndi a, o doola anya na anyi ahula nkowa gbasara nkowa aha, nru aka, nnochị aha onwunwe, mkpokota na onuogu. Ndi niile a bu otu mkpuru okwu ka ha na-akowa. Naani Nkebi ahiri kenkwa bu nke na-akowa ukwu mkpuru okwu (group-word modifier). Nke ozo na-akowa ukwu mkpuru okwu anyi ga-eleba anya na ya bu nkowa nnochị.

2.3 Nkowa Nnochị (Apposition)

Crystal (1992) na-akowa na nkowa nnochị bu otutu mkpuru okwu gbakoro aka na-akowa ihe na-anochi anya ha n’ahiri okwu. O bu okwu utọ asusu (grama) e ji akowa nsoko mperimpe njiasu nke bu ndinime ahiri okwu na-anọ n’ogo grama, nke na-enwe njirimara, ma o bu na-ejiko aka ekwu maka otu ihe. N’ikowa nkowa nnochị, Uba-Mgbemena (2000) na-asị na o bu ihe na-eme n’usoro okwu, nke na mpekele katigori usoro okwu na-anọ n’otu ogo, nwere myiri ma o bu na-arutu aka n’otu ihe; ma o bu na ihe otu n’ime ha na-arutu aka dikwuazi n’ime ihe nke ozo na-arutukwa aka.

Wikipedia.org (2011), na nkowa nke ya, na-ekwu na nkowa nnochị bu ebe aha ma o bu okwu na-arụ ọrụ ka aha na-esote ndika ya ozo, iji ziputa ya ma o bu kowaa ya. Omuma atu nkowa nnochị Umeodinka (2011) na-enye bu ndi a: omuma atu (9): (a)

Uche ome mma (ya bu, nke ahụ na-eme mma) alotala. (Uche the good man (i.e. the one that does something good) has returned). (b) Iko nke ahụ unu wetere awaala. (The cup, the one that you brought has been broken). Omuma atu ndi a bu nkowa nnochị kemgbochi (restrictive apposition). Ihe o na-egosi bu na nkowa nnochị nke asusu Igbo bucha nkowa na-akowa aha n’uzo nke ya. Ha na-akowa isi ahiri. Eyisi (2006) na-ekwu otu ihe ahụ: na nkowa nnochị bu otu aha ma o bu nkebi okwu keaha, nke na-esote aha ozigbo iji gosi ya, ziputaya, kowakwa maka ya.

Umeodinka (2011) na-ekwu maka ajuju ndi mmadu na-aju gbasara nkowa nnochị. Ajuju ndi ahụ bu: kedu udi mmetuta utọ asusu di n’etiti ihe ndi ahụ mebere nkowa nnochị? Njikoro ha nwere, o bu nke nhatanha (coordination) ka o bu nke ndabe (subordination)? Olee udi ndoko okwu a ga-enwe ike isi na o bu nkowa nnochị?

N’iza ajuju ndi a, Uba-Mgbemena (2000) na-ekwu na ihe ndi di n’ime nkowa nnochị ga-enweriri ogo nhatanha na grama; o nweghi nke ogo ya ga-aka nke ibe ya. Omuma atu (10): (a) Ebuka, nwoke luru ogo, bu dimgba. (Ebuka, the man who fought, is a wrestler). (b) Izu ohi, omume uwa niile katoro, bu aru. (To steal, an act condemned by the entire world, is an abomination). N’ikowa omuma atu ndi a, Uba-Mgbemena (2000) na-akowa na “Ebuka” na “nwoke luru ogo”, “izu ohi” na “omume uwa niile katoro” na-arụ ọrụ aha n’ahiri okwu. O ji ya na-ekwu na njirimara ahụ mmebere nkowa nnochị ji anọ n’ogo nhatanha na grama bu ihe nkowa nnochị na okwu nhatanha (coordination) nwekoro onu.

Gbasara nkowa nnochị, quirk na Greenbaum (1973) na-akowa na ihe e ji ama nkowa nnochị bu na a ga-enweriri njiko di n’etiti mmebere ma o bu mperimpe njiasu grama nwere nke nwere mmetuta. Ha na-ekwu na ihe e ji ama nkowa nnochị bu na ihe ndi mebere ya ga na-arutu aka ma o bu na-ekwu maka otu ihe, ha niile ga na-arutu aka

n'otu ihe. ọ bụrụgodu na ha anaghị arụta aka n'otu ihe, ihe otu n'ime mmebere ya na-arụta aka ga-adiri n'ime ihe nke ọzọ. Crystal (1991) sokwa ekwu na mmebere nkowa nnochị ga na-aruriri otu ụdị ọrụ usoro okwu n'ahiri okwu ahụ. Ọrụ ahụ bụ na ihe ha na-ekwu maka ya ma ọ bụ arụta aka ga-aburiri otu ihe; ya bụ, ha ga na-ekwu maka otu ihe, ma nọrọkwa n'ogo nhatanha n'uto asusu Igbo.

Trask (1993: 19) na-akowa na nkowa nnochị bụ nkebi okwu keaha na-esote nkebi okwu keaha ọzọ ozigbo, nke na nkebi okwu keaha abuo ahụ ga na-arutụ aka n'otu ihe; ihe ha abuo na-arutụ aka na ya agaghị adi iche; n'onodu isote onwe ha ahụ, ha ga na-akpa agwa ka otu nkebi okwu keaha n'ime ahiri okwu ahụ. Omuma atu o ji eziputa nkowa ya na Bekee bụ: omuma atu (11): (a) "Paris, the greatest city in France, is changing its face". (Paris, obodo kachasi ndi ozo na France, na-agbanwe ihu ya). (b)

"His newest book, the last one in the trilogy, concludes the saga". (Akwukwo ya ahụ dikarichara ọhuru, nke ikpeazu n'akwukwo ato ahu, mechiri ide akwukwo odogwu). N'ebe a, okwu ndi bụ nkowa nnochị bụ ndi ahụ a kara ihe na ha. Ihe ha ji buru nkowa nnochị bụ na, a bja na (a), "obodo kachasi ndi ọzọ na France" bụ ya ka "Paris" na-akowa. "Obodo kachasi ndi ọzọ na France" bụ 'Paris' ka a na-ekwu maka ya. Obodo "na-agbanwe ihu ya bukwa "Paris" ka ọ na-arutụ aka. Nke a na-egosị na ndinime ndi a niile na-arutụ aka n'otu ihe. Ha niile nokwa n'ogo nhatanha na grama Igbo.

2.3.1 Nkowa Nnochị Na Mmetuta Si Na Grama

Freedictionary.com (2011) na-akowa ihe bụ mmetuta, wee na-asị na ọ bụ mmeorita nsineke di n'etiti ihe abuo ma ọ bụ kari; ya bụ, ihe ndi ahụ idi ibe ha mkpa. N'onodu a ka quirk, Greenbaum, Leech na Svartvik (1985) ji asi na e nwere mmeorita doro anya di n'etiti ihe mebere ahiri okwu nkowa nnochị. Ha si na ya weputa uto ihe ato ahiri okwu ọ bula ga-eji tozu ibu nkowa nnochị. Ha bụ ndi a: (i) E nwere iwepu nkowa nnochị ndi ahụ, mana ọ gaghi eme ka ahiri okwu ahụ ghara izu oke. (ii) Nke ọ bula n'ime nkowa nnochị ndi ahụ na-arụ otu ụdị ọrụ utoasusu. (iii) E nweghi ihe di iche n'ahiri okwu nke mbu na nke ọzọ di n'ime ya.

Uba-Mgbemena (2000:1) na-enye onodu ndi a maka ntozu ahiri okwu ga-abu nkowa nnochị: (i) Nkowa nnochị bụ ọrụ usoro okwu (sintaaks). (ii) Mpaghara ahiri okwu ya niile nwere nhatanha n'ogo usoro okwu. (iii) Mpaghara ahiri okwu niile ahụ na-arutụ aka n'otu ihe. (iv) Mmebere ya na-anoko onu, ma ọ bụ noro na nsote onwe ha (sequence).

2.3.2 Njirimara Ndoko Nkowa Nnochị

Gbasara ndoko nkowa nnochị, Crystal (1991) na-ekwu na asusu bu ihe e dokoro edoko. N'ihu ya, asusu bu mperimpe njiasu di iche iche, nwere mmetuta, e wee dokoro ha onu. ọ bụ mmetuta a ka asusu (di ka Igbo) na-esi na ya emeputa nkowa nnochị nwere nghota di iche iche, ma na-arụ ọrụ ya n'asusu. Quirk na Greenbaum (1973) na-akwado na e nwere njirimara na-eziputa ahiri okwu bu nkowa nnochị. N'okwu ha, e nwere udi mkpuru okwu e ji amata ahiri okwu bu nke nkowa nnochị. Udi mkpuru okwu ndi ahụ n'Igbo bu "tumadi", "ya bu" na "ma" di ka Umeodinka (2011: 76) si eziputa. Omuma atu (12): (i) **Ya bu:** ọ choro ego, ya bu, ego buru ibu. (ii) **Tumadi:** Ikenna ma agu egwu, tumadi egwu uka. (iii) **Ma:** Ndi egwu ha, ma umu nwaanyi ma umu nwoke, soro bja.

Crystal (1991) na-akwado quirk na Greenbaum (1978) n'okwu ha, na tupu e nwere nkowa nnochị, mmebere ahiri okwu ahụ ga-aburiri ngwa asusu nwere njiko ma ọ bụ

n'ọdu n'otu ogo, ogo mmetuta ha aburu nke nhatanha na grama. Nkwa ha ozo bu na mmebere nkwa nnochii niile na-agbako aka na-ekwu maka otu ihe ma o bu otu onye. Ha na-ekwukwa na o bu nkwa nnochii nke izizi ka nke abuo na-ekwuwaputa. o bu site n'ime ka ha abuo kwuko onu (be juutaposed) ka nke abuo ji etinyeju otutu nzirita ozi n'ime ya, tinyere nkwurukwasa so ya. Ha na-ekwu na ndoko okwu na-egosi na otutu okwu di iche iche na-emebe nkwa nnochii, di ka: nkebi okwu keaha, nkebi okwu kemfinitivu, nkebi okwu kembuuzo, w.d.g.

2.4 Udi Nkwa Nnochii E Nwere

Uba-Mgbemena (2000) bu na ndoko (structure) na mputara (meaning) ka o na-agbado ukwu n'ikewa udi nkwa nnochii e nwere n'Igbo. Site na ndoko, o na-ekwu na e nwere uzo nkwa nnochii abuo – kengawanye (continuous) na nke ngadebe (non-continuous). N'akuku nke ha, Ekodimuo (1988), Crystal (1991), Eyisi (2006) na Wikipedia (2011) na-akwudosi ike n'ikwu na nkwa nnochii bu nkwa aha ma o bu nkwa nkebi okwu keaha. Hodges na Whitten (1982) na-ekwu na e nwere nkwa nnochii udi ya bu kemgbagwo (compound appositives).

N'ebe o gbasara asusu Igbo, o bu Eleodimuo (1988) na Uba-Mgbemena (2000) na-akwa udi nkwa nnochii di n'Igbo. N'ebe o gbasara nghota okwu, ha abuo na-ekwu na e nwere kemgbochi (restrictive) na ke-enwemgbochi (non-restrictive). Eleodimuo (1988) enweghi udi nkwa nnochii o na-ekwaputa maka usoro okwu. Uba-Mgbemena (2000) nwere udi bu maka nghota okwu na usoro okwu. Ebe a ka ha abuo di iche gbasara udi nkwa nnochii di n'asusu Igbo.

N'ituleghari okwu ndi a, n'ihii na Uba-Mgbemena (2000) na Eleodimuo (1988) akwughi otu ebe n'udi nkwa nnochii e nwegasiri, o kwesiri ka anyi leba anya n'uzo ozo ka mma iji webata udi nkwa nnochii di iche iche e ji asu asusu Igbo n'oge ugbo a. Iji ziputa udi nkwa nnochii ndi ozo e ji asu asusu Igbo kari nke Eleodimuo (1988) na Uba-Mgbemena (2000), Umeodinka (2011) na-eweputa udi nkwa ndi ozo o choputara. o na-ekewa udi nkwa nnochii di n'asusu Igbo etu o ga-esi webata udi metutara usoro okwu na udi metutara nghota okwu. Nkewa nke Umeodinka (2011) na-egosi na e nwere nkwa nnochii nke usoro okwu na nke nghota okwu.

A bia na nke usoro okwu, e nwere nke ngawanye (continuous) na nke ngadebe (non-continuous). Nke ngawanye nwere nkewa ano, mana nke ngadebe enweghi nkewa. Nkewa nke ngawanye mutara nkwa nnochii keahiri okwu, kemkpuru okwu, kempekele na kenkwughari aha. Nke ahiri okwu nwere udi abuo – kenkebi okwu na kenkebi ahiri. N'otu aka ahii, kemkpuru okwu nwekwara udi abuo – kenononwe na keanonoghi onwe. Etu a e si kewa nkwa nnochii nke usoro okwu ka Umeodinka (2011) sikwa ekewa nkwa nnochii nke nghota okwu n'udi di iche iche.

2.5 Atutu Nchocha

Atutu anyi ji eme nchocha a bu Atutu Ndoko okwu (structuralism), nke si n'aka Ferdinand de Saussure n'afu 1916.

2.5.1 Ebumnuche atutu a:

Ebumnuche atutu Ndoko okwu bu ndi a:

(i) Igba mbo n'ikwa udi ndoko okwu o bu mma na-echeputa ma na-aghota. (ii) Ichu imata udi mmetuta (relation) di n'ihe o bu a na-edoko ya na ndi ozo ka ha

rụkọrịta ọrụ ọhụ. (iii) Ihuta ihe gbasara omenala na agumagu dị ka ihe nwere usoro, mpaghara yandị ọzọ aburū alaka dị iche iche mebere usoro ahụ. (iv) ọ na-ahụ maka usoro a gbasoro wee mebe ihe ọ bụla, etu ahụ e si agbaso usoro n'irū ụlọ (Allen Brizee na Tompkins, 2011). (v) Ntucha asụsụ ọ bụla ga-enweriri usoro doru anya ọ ga-agbaso, usoro sayensi. (vi) Njiatule asụsụ ọ bụla ga-aburiri nke e wetara site n'etu agburu nwe asụsụ si asụ ya. (vii) Asụsụ a na-atucha ga-abu nke dabara adaba n'iwu ndi new asụsụ ji asụ asụsụ ha n'oge ahụ. (viii) Iwu e ji emebe ahiri okwu n'asụsụ ahụ ka a na-ele anya ya. (ix) Etu okwu si esote onwe ha na-esite n'iwu e ji asụ asụsụ ahụ.

2.5.2 Usoro Itinye Atutu N'oru

Ebe atutu a na-ebu ọzọ eleba anya bu n'etu e siri dokọ okwu di n'ahiri okwu iji mata udi mmetuta mkpuru okwu ndi e jiri mebe ya nwere, na etu ahiri okwu ọ bula si daba nke oma n'iwu e ji asụsụ asụsụ ahụ n'oge ahụ. Asụsụ na-enwe usoro okwu. N'ihia ya, atutu ndoko ga-achọ ima ma mmebere nkowa nnochị ma ha esonyekwara n'iwu na-agbazi etu mmebere ndi ahụ si arukorita oru n'ahiri okwu Igbo. Ọ ga-achokwa imata etu mmebere ndi ahụ si esote onwe ha were abu okwu nkowa nnochị.

3.0 Ntucha Nchoputa Nchocha

N'ebe a ka anyi ji ntuzi aka atutu ndoko na ihe ndi anyi nwetara na ntuleghari agumagu eme ntucha nchocha, iji nweta nchoputa nchocha. ọ bu ebumnuche nchocha ka anyi na-ewere n'otu n'otu iji me nke a.

3.1 Ntucha Ihe Bu Nkowa Nnochị

Site n'ihe anyi nwetara na ntuleghari agumagu, nkowa nnochị bu udi okwu si na ndoko okwu uto asusu aputa n'asusu, tumadi asusu Igbo. Ntuleghari anyi mere gosiri na etu nkowa nnochị si aputa n'asusu bu mgbe a chorọ ibawanye ozi ma ọ bu nghota di n'ime ofu ahiri okwu. ọ bu mgbe di etu a ka a na-agbado ukwu n'usoro iwu ndoko okwu asusu Igbo wee meputa udi ahiri okwu nwere nkowa nnochị.

Nkowa nnochị, di ka aha ya siri di, bu okwu di n'ime ahiri okwu were na-akowa okwu nke na-anochi anya ya n'ahiri okwu ahụ. Nkowa nnochị bu udi nkowa puru iche ma a tulee ya na nkowa aha, nru aka, mkpokota, onuogu na nnochị aha keonwunwe.

Otu n'ime njirimara nkowa nnochị bu na ya na okwu ọ na-akowa na-anọ n'akuku onwe ha (juutaposed). Njirimara ya ọzọ bu na ọ na-abu aha ma ọ bu nkebi okwu keaha na-akowa nke na-anochi anya ya. Nke ọ bula na-arutu aka n'otu ihe ha abuo na-ekwu maka ya. ọ bu oru ya di etu a mere <https://www.thought.com> (2018) ji akowa ya di ka idoko njiasu abuo (nke na-abukari nkebi okwu keaha) n'akuku onwe ha, nke na nkebi okwu nke abuo na-aru oru ikowa nke mbu, ma ọ bu kpoọ ya ahụ ọzọ.

Ọ bukwa nghota njirimar ndi a mere Eyisi (2006) ji akowa "nkowa nnochị" di ka ofu aha ma ọ bu nkebi okwu keaha nke a na-etinye ka ọ na-esote aha ozigbo n'ahiri okwu, iji gosiputa ya, kowaa ya, ma ọ bu nyewanye anyi nkowa maka ya. Na ntuleghari agumagu anyi mere, quirik, Greenbaum, Leech na Svartvik (1973) na-ekwenye na nkowa Eyisi (2006), ma na-akowa na tupu njiasu abuo ahụ aburu nkowa nnochị, nke ọ bula n'ime ha ga na-ekwu maka otu ihe (na-arutu otu ihe aka), ma ọ bu na ihe ofu n'ime ha na-arutu aka (ekwu maka ya) ga-adikwuazi n'ihe nke ọzọ na-arutu aka. omuma atu (13): (a) Udoka, nwoke di afọ iri ato, no n'ulo ogwu. (Udoka, a man of thirty, is in the

hospital). (b) Umuchu, obodo di n' Aguata, bu ala nsọ. (Umuchu, a town in Aguata, is a holy land). (ch) uKochukwu, onye kara uka taa, alaala. (The Priest who celebrated mass today, has gone). N' ahiri okwu "(a)", "Udoka" na "nwoke di afọ iri ato" bu okwu nkowa nnochị. Na ya, "nwoke di afọ iri ato" na-anochite anya "Udoka". o bukwa "Udoka" ka o na-akowa; ya bu, "nwoke di afọ iri ato" bu nkowa nnochị, n' ihi na o na-akowa "Udoka" o na-anochi anya ya. Okwu abuo a na-arutu aka n' otu ezimozi n' ahiri okwu ahụ. Ha abuo na-abawanye ozi ahiri okwu a na-ezi: (i) Udoka no n' ulo ogwu (Udoka is in the hospital). (ii) Nwoke di afọ iri ato no n' ulo ogwu. (A man of thirty is in the hospital).

N' otu aka ahụ, na "(b)", "Umuchu" na "obodo di n' Aguata" no onodu okwu nkowa nnochị n' ahiri okwu ahụ. Ha abuo na-ekwu maka otu ihe. "Obodo di n' Aguata" na-anochi anya "Umuchu". "Umuchu" bukwa "obodo di n' Aguata". Ha abuo na-agbako aka ekwu maka otu ihe, di ka: (i) Umuchu bu ala nsọ (ii) Obodo di n' Aguata bu ala nsọ. omuma atu "(a)" na "(b)" na-egosikwa na "Udoka" na "nwoke di afọ iri ato" no n' akuku onwe ha; "nwoke di afọ iri ato" na-akowa Udoka o na-anochi anya ya. "Udoka" no n' akuku "nwoke di afọ iri ato" etu "Umuchu" si noro n' akuku "obodo di n' Aguata". "Umuchu" bu aha. "Obodo di n' Aguata" bu nkebi okwu keaha. "Udoka" bu aha. "Nwoke di afọ iri ato" bukwa nkebi okwu keaha.

3.1.1 Nkowa Ihe Bu Nkowa Nnochị Kpomkwem

Site na nkowa na usoro ndoko okwu niile a anyi tulerela, anyi ga-akwudosiji ike n' ikwu na Nkowa nnochị bu udi nkowa na-aputa na ndoko okwu uto-asusu, nke na-abu gbasara aha ma o bu nkebi okwu keaha abuo isote onwe ha ozigbo n' ahiri okwu, n' udi na nke abuo ga na-akowa nke mbu, ebe ha abuo gakwa na-arutukorita aka n' otu ezimozi.

3.1.2 Uru Nkowa Nnochị Bara

Nkowa nnochị bu gbasara ndoko okwu, idoko okwu onu ka nke a na-anochi anya ya na-akowa nke na-anochi ya. O bu nkebi okwu na-aguhari nkebi okwu nke ozo aha, di ka: Chinyere, nwaanyi ngala (Chinyere, a proud woman); Ikemba, onye okwu na uka (Ikemba, a troublesome person). Ejikwa nkowa nnochị abawanye ezimozi di n' ahiri okwu. E jikwa ya egbujilata nkebi okwu e ji akowa okwu, iji bee okwu nke nke. E jikwa ya atunwo okwu, ma o bu mee ka ahiri okwu e ji ekwu okwu ghara idi etu o di, nwee ntugwa, wee to o. E ji nkowa nnochị agbakwunye nkowa di iche iche n' aha.

3.2 Ntucha Njirimara Nkowa Nnochị Site N' Usoro Okwu

Na ntuleghari agumagu, anyi choputa na Eleodimuo (1988), Uba-Mgbemena (2000) na Umeodinka (2011) lebara anya na njirimara nkowa nnochị. N' ebe a, anyi na-achọ igbado ukwu n' usoro okwu wee ziputa njirimara nkowa nnochị n' asusu Igbo. Anyi ga na-eziputa ha n' otu n' otu.

3.2.1 Mmberere Nkowa Nnochị Nwere Ike Inwogharị Onwe Ha

Njiasu ndi mebere nkowa nnochị nwere ike inwogharị onwe ha, tumadi n' iru oru di ka isi aha ma o bu isi ahiri. Omuma atu (14): (a) Nzube, onye mkpikpi, ma naani onwe ya. (Nzube, a stingy person, knows only himself). (b) Egodi, nwaanyi na-eme amara, nyere m ego. (Egodi, a gracious woman, gave me money). Etu o bu na nkebi okwu nke abuo na nke mbu na-egosu ofu nghota (na-arutu aka n' otu ihe) n' ahiri okwu ahụ, ihe o putara bu na nke o bu n' ime ha nwere ike ino n' otu ebe ahụ ma nyekwa nghota.

Ọmụma atụ (15): (a) Nzube, onye mkpikpi, ma naanị onwe ya. (b) Onye mkpikpi ma naanị onwe ya. (The stingly knows only himself). N’ebe a, “onye mkpikpi” enwoghariala onodu ya, jee nodu n’isi ahiri, ebe “Nzube” nobu, ma na-enyekwa otu nghota ahụ.

3.2.2 Inwe Ngosi Nkwa Nnochi

E nwere okwu ndi na-egosi na ahiri okwu a na-ekwu maka ya bu nke nwere nkwa nnochi. Na Bekee, okwu ndi ahụ bu njirimara nkwa nnochi, Quirk na Greenbaum (1973) na-akpo ha “indicators of apposition” (Umeodinka, 2011: 76). E nwere udi okwu ndi ahụ n’asusu Igbo, mana o bu onye o masiri o tinye ya n’ahiri okwu o ji asu asusu. Ọmụma atụ okwu ndi ahụ na-egosi nkwa nnochi bu: “ya bu” (that is), “ma” (both), “tumadi” (including/both). Ọmụma atụ (16): (a) Na mmemme ahụ, ma umu akwukwo Igbo ma ndi anaghi agu Igbo ka a kporo. (In that occasion, both Igbo and non-Igbo students were invited). (b) o na-achọ nwaanyi, ya bu, nwaanyi mara mma. N’omuma atụ “(a)” na “(b)”, okwu ndi a kara ihe bu ngosi nkwa nnochi n’ahiri okwu ndi ahụ.

3.2.3 Mmembere Ya Ino N’Ogo Nhatanha N’uto-asusu

A bia na grama Igbo, okwu ndi na-emebe nkwa nnochi na-esi n’otu ogogo usoro okwu, ogogo nkebi okwu keaha (NP). Ino n’ogo nhatanha na grama (equal grammatical status) bu njiamahiri okwu bu nkwa nnochi. Ọmụma atụ (17): (a) Nwunye m, Chinelo, bu onye ekpere. (My wife, Chinelo, is a prayerful person). (b) Ogo m nwaanyi, Nkechi, di ike oru. (My sister in-law, Nkechi is hardworking). N’ahiri okwu “(a)” na “(b)”, “Nwunye m” na “Chinelo”, “ogo m nwaanyi” na “Nkechi” bucha oru mkpoha (nominal functions) ka ha na-aru. (ch) Irokanulo, nwoke okwu na uka, anwula. (Irokanulo, a quarrelsome man, is dead). Etu ahụ kwa ka “Irokanulo” na “nwoke okwu na uko” si aru oru nkebi ahiri kenkwa aha (adjectival clause) n’ahiri okwu “(ch)”.

3.2.4 Mmembere Nkwa Nnochi Na-Arutuko aka N’Ofu ihe (Co-referentiality of Appositive Constituents)

N’udi njirimara ndoko nkwa nnochi, njiasu ma o bu mmembere ya niile na-arutuko aka n’otu nghota okwu. Nke a gosiri na a na-edoko mmembere ya onu na grama etu ha gae si na-arutu otu ihe aka n’otu ahiri okwu. Ọmụma atụ (18): (a) Uche, ezigbo enyi m, bu ezigbo onye uka kwudosiri ike. (Uche, my good friend, is a dedicated Christian). (b) Ihunanya, agwa Jesu Kristi, bu igodo nke eligwe. (Love, the character of Jesus Christ, is the key to heaven).

Lee nkwa etu ha si arukota n’ofu okwu ((i) – (iv)):

- | | |
|--|-------------|
| (i) Uche na-akwudosi ike n’uka | Nrutuko aka |
| (ii) Ezigbo enyi m na-akwudosi ike n’uka | n’otu okwu |
| (iii) Ihunanya bu igodo nke eligwe | Nrutuko aka |
| (iv) Agwa Jesus kristi bu igodo nke eligwe | n’otu okwu. |

3.3 Ntucha udi Nkwa Nnochi E Nwere

Ntuleghari anyi mere na-egosi na beluso Eleodimuo (1988), Uba-Mgbemena (2000) na Umeodinka (2011) gbadoro ukwu n’usoro okwu were nye nkewa udi nkwa nnochi di n’asusu Igbo. Eleodimuo (1988) chikotara ha onu na-ekewaputaghi ya n’udi ndi sitere na nghota okwu na ndi sitere na ndoko okwu. Uba-Mgbemena (2000), na nkewa

nke ya, tinyere ụdị sitere n’usoro okwu, mana ọ bụ naanị ụzọ abụọ – kengawanye (continuous) na kengadebe (non-continuous) ka o ziputara. O kewamighị nke ya ekewami dị ka Umeodinka (2011) siri me. N’ihi ndịiche a, anyị ga-achikọta nkewa nke Uba-Mgbemena (2000) na Umeodinka (2011) wee ziputa ụdị nkọwa nnọchi e nwere n’asụsụ Igbo ma a gbado ụkwụ n’usoro okwu.

3.3.1 Ọmụma atụ ụdị Nkọwa nnọchi E Nwere N’Igbo

Ebe a ka anyị na-akọwa n’otu n’otu ụdị nkọwa nnọchi dị n’asụsụ Igbo.

3.3.2 Nkọwa Nnọchi Kengawanye (Continuous apposition)

Nkọwa nnọchi kwngawanye bụ nke mmebere ya na-akwuso onwe ha, ya bụ, nọrọ onwe ha na n’akụkụ na-enweghị mkpuru okwu na n’etiti ha abụọ, ma na-esote onwe ha. Anyị ga-enye ọmụma atụ nkewo e kewara kengawanye n’otu n’otu.

3.3.3 Ọmụma atụ (19): Nkọwa nnọchi Kengadebe (Non-continuous)

Ihe bụ nkọwa nnọchi kengadebe bụ nke ahụ nkebi okwu na-eje nọchie n’etiti mmebere nkọwa nnọchi, tinye nkewa n’etiti ha, dị ka: (a) ọrụ e jiri mara Nwobi amalitela, oru Chukwu. (The function characteristic of Nwobi has started, God’s work). (b) ụdị egwu na-amasị umu agboghọ ebidola, egwu onwa. (The type of play young girls like has started, moonlight play). N’ahiri okwu abụọ a, na (a), “oru Chukwu” na (b), “egwu onwa” bụcha nkọwa nnọchi kengadebe. Ha bụ ndị a kara ihe.

3.3.4 ọmụma atụ (20): Nkọwa nnọchi Ke-ahiri okwu (Sentential apposition)

Nkọwa nnọchi Ke-ahiri okwu bụ nke ọ bula ukwu mkpuru okwu dị nay a nwere nghota zuru oke, dị ka: (a) Ebere gara n’ulo ụka, ulo uka dichiri uzo. (Ebere went to the church, the Church by the road side). (b) Ada nwudere nnunu, nnunu na-efe efe. (Ada caught a bird, a bird in flight). Na (a), “ulo ụka dichiri ụzọ” na (b), “nnunu na-efe efe” bụcha ahiri okwu nwere nghota zuru oke; ya bụ, nkọwa nnọchi ke-ahiri okwu.

3.3.5 Ọmụma atụ (21): Nkọwa nnọchi Kenkebi okwu (Phrasal apposition)

Nkọwa nnọchi kenkebi okwu bụ nke nghota ya ezughị oke. ọ pụrụ iche na Ke-ahiri okwu. Ihe e jiri mara kenkebi okwu bụ na ọ naghị enwe isi ahiri (subject) na okwuputa (predicate) (Murthy, 2007), dị ka: (a) Oge bere akwa, akwa igbo aghugho. (Oge cried, a cry of deceiving(deceit)). (b) Ugodiye jere ulo, ulo ikpota nwaneku. (Ugodiye traveled home, home to bring a nanny). Okwu ndi a kara ihe na (a) na (b) bụ nkọwa nnọchi kenkebi okwu. Ihe o jiri buru kengawanye bụ maka na nkọwa nnọchi nọ n’akụkụ isi ahiri wee na-akọwa ya: ‘akwa’ na ‘akwa igbo aghugho’, ‘ulo’ na ‘ulo ikpota nwaneku’ nọdebere onwe ha, ‘ulo’ na ‘ulo’ wee na-agawanye etu ‘akwa’ na ‘akwa’ si agawanye.

3.3.6 Ọmụma atụ (22): Nkọwa nnọchi Kenkebi-ahiri (Clausal apposition)

Nke a na-enwe isi ahiri na okwuputa, ma na-akowakwa isi ahiri n’out aka ahụ. ọ na-enwe nkọwa nnọchi, ma nwekwaa okwu na-akọwa nnọchi ahụ, dị ka: (a):Ikwafu mmiri, mmiri e chutere echute, ajọka. (To push down water, fetched water, is bad). (b) Igu akwukwo, akwukwo amutahi ihe, adighi mma. (To study, a study without learning, is bad). Okwu ndi a kara ihe bụ nkọwa nnọchi kenkebi ahiri, na (a) na (b). Okwu ndi ahụ na isi ahiri nọ onwe ha n’akụkụ (nkwuso, (juxtaposition) wee na-akọwa isi ahiri.

3.3.7 Ọmụma atụ (23): Nkọwa nnọchi Kennọrọonwe (Solitary apposition)

Dị ka aha ya siri dị, ọ bụ nke na-anọ naani ya, o nweghị nke na-akwuso ya (nọdebe ya), dị ka: (a) Udo gara obodo oyibo, South Korea. (Udo travelled abroad, South Korea). (b) E nwere ihe nwagboghọ ahụ choro ka gi na ya mebe, enyi. (There is something that young girl wants you and her to do, friendship). Okwu ndi a kara ihe na (a) na (b) bu nkowa nnochi Kennoroonwe; ya bu, ‘South Korea’ na ‘enyi’. Ha abuo kwusoro isi ahiri ha, wee na-akowa ha. “South Korea” na “enyi” nooro onwe ha n’ahiri okwu ndi ahụ.

3.3.8 Ọmụma atụ (24): Nkọwa nnọchi Ke-anoroghị onwe (Non-solitary apposition)

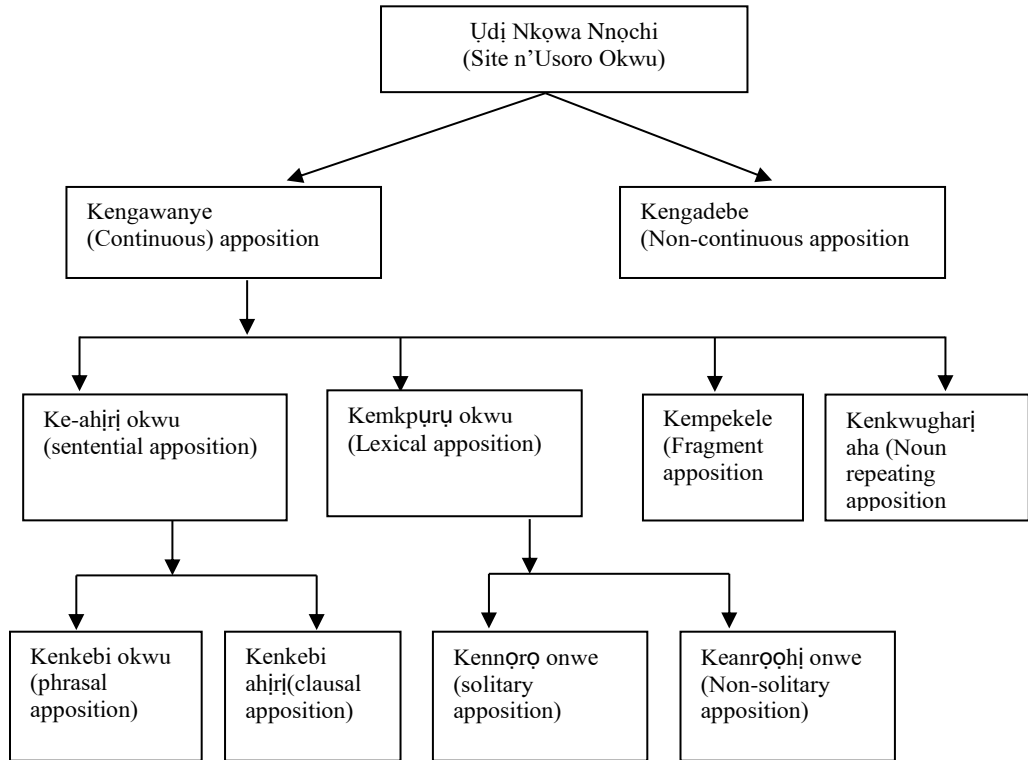
Nke a bu udi nkowa nnochi anaghi ano naani ya. ọ ga-enweriri mkpuru okwu ndi ya nay a nodebere, di ka na nke a: (a) Anyi na-achọ Emeka, onye isi ochichi Umuuchu. (We are looking for Emeka, the Umuuchu President). (b) Okeshi na-achọ Obinna, nnwa Adadiine. (Okeshi is looking for Obinna, Adadiine’s son). Na (a) na (b), ‘onye isi ochichi Umuuchu’ na ‘nnwa Adadiine’ bucha nkowa nnochi ke-anoroghionwe. Ha abuo kwusoro isi ahiri, “Emeka” na “Obinna” ha na-akowa. Na nke mbu, e nwere ‘onye’, ‘isi’, ‘ochichi’ na ‘Umuuchu’. Na nke abuo, e nwere ‘nnwa’ na ‘Adadiine’. Ndi a bucha mkpuru okwu anoroghị onwe ha.

3.3.9 Ọmụma atụ (25): Nkọwa nnọchi Kempekele (Fragment apposition)

Mpekele bu ihe o bua abughi ahiri okwu; ọ bu alaka ahiri okwu, di ka nkebi okwu ma o bu nkebi ahiri kendabe (subordinate clause) di n’ime ahiri okwu. Ahiri okwu enweghi ike ibu nkowa nnochi, mana mghe o bua e tinyere ya akara edemede (punctuation mark), ọ buruzie nkowa nnochi kempekele, di ka: (a) Chinelo weere oroma, nke chara acha. (Chinelo took an orange, the ripe one). (b) Udo nwere ihe omume na-eche ya: idecha ihe o na-edee, iri nri na iga na Mahadum. (Udo has duties waiting for him: to finish what he is writing, to eat and to go to the University). Ndi bu nke Mpekele bu ndi ahụ a kara ihe, na (a) na (b). Ha na-akowa ‘oroma’ na ‘Udo nwere ihe omume na-eche ya’, n’otu n’otu.

3.3.10 Ọmụma atụ (26): Nkọwa nnọchi Ke-nkwughari aha (Noun-Repeating apposition)

Nke a na-abaghari aha, nwekwaa ike ikwughari aha e kwurula na mbu, iji me ka o doo anya, di ka: (a) Chiemerie tara okpukpu, okpukpu okuko. (Chiemerie chewed bone, a chicken’s bone). (b) Udeze zuru mma, mma ohuru. (Udeze bought a knife, a new knife). Na (a) na (b), e kwughariri ‘okpukpu’ na ‘mma’. Okwu ndi a kara ihe bu nkowa nnochi ke-nkwughari aha. Ha abuo na-akwuso aha ha na-akowa n’ahiri okwu. Anyi na-egosị nkewa nkowa nnochi site n’esere a:



Eserese a na-egosi na site n'usoro okwu, nkwa nnuchi kewara onwe ya uto abuo – kengawanye na kengadebe. N'ime ha abuo, kengadebe enweghi nkwa ozo; o gadebere ebe ahu. Mana kengawanye ka e kewara uto anọ wee nweta ke-ahiri okwu, kemkpuru okwu, kemkpuru okwu, kempekele na kenkwughari aha. Na nkwa anọ a, naani ke-ahiri okwu na kemkpuru okwu kewakwara onwe ha uto abuo uto abuo. uto abuo nke mbu bu kenkebi okwu na kenkebi ahiri site na kenkebi ahiri okwu. Nkwa abuo ozo bu kemkpuru okwu kewara onwe ya uto abuo wee nweta kennoro onwe na keanrogh onwe. Na nchikota ya, asusu Igbo, site n'usoro okwu kewatara nkwa nnuchi o nwere uto iri.

4.0 Nchikota Nchoputa Nchocha Na Mmechi

Ebe a ka anyi ga-esi uto nkenke gosi nchoputa anyi nwetara na nchocha a. Nke a gasia, anyi ekwuo okwu mmechi.

4.1 Nchikota Nchoputa Nchocha

Ebumnuche ato anyi ji malite ime nchocha a bu ikwa ihe bu nkwa nnuchi, ichoputa njirimara ndoko okwu nkwa nnuchi na igbado ukwu n'usoro okwu (ndoko okwu) wee choputa udi nkwa nnuchi e nwegasiri n'asusu Igbo. Mbọ anyi n'ichoputa ebumnuche ndi a mitara mkpuru.

Mkpuru mbu o mitara bu na anyi enwetala nkwa ihe bu nkwa nnuchi. Nkwa nnuchi bu otu mkpuru okwu (aha), ma o bu ukwu mkpuru okwu (nkebi okwu keaha) abuo na-anodebe onwe ha na ndoko okwu uto-asusu, n'udi na mkpuru okwu ma o bu nkebi okwu nke abuo na-arutuko aka n'ozu ha na-ezi. Nchoputa nke abuo bu gbasara njirimara usoro okwu nkwa nnuchi. uto ihe anọ anyi choputara bu ndi a: (i) ihe ndi

mebere nkowa nnochị nwere ike inwoghari onwe ha n'ahiri okwu; (ii) usoro okwu ya na-enwe ihe ndi na-eziputa ahiri okwu bu nke nkowa nnochị. (iii) ihe ndi mebere ya na-anọ n'ogo nhatanha na grama; (iv) mmebere ya na-arutuko aka n'otu ezimozi. Gbasara isite n'usoro okwu wee mata udi nkowa nnochị e nwere n'asusu Igbo, anyi choputara na udi nkowa nnochị asusu Igbo nwere di iri.

4.2 Okwu mmechi

Nhochcha a malitere site na mkpa o di ka e gosiputa otu n'ime otutu uzo e si eme ka iji ahiri okwu ezirita ozi na-aga etu o kwesiri, nwee mgbanwe, nwekwaa ntugwa ma na-atọ uto. o bu n'iji me nke a ka anyi ji nyochaa nkowa nnochị na udi ya n'asusu Igbo. Ebumnuche ato ka anyi ji malite ya, ma nwetakwa nchoputa ato ugbo a anyi mesiri nchocha. Nke a gosiri na anyi ariala oji kpara ya nku. Anu ndi anyi ji maka ha je nta, anyi agbagbuola ha niile. Anyi ji maka odimma asusu Igbo je ime nchocha, ma nweta ihe anyi choro.

Ugbo a, onye Igbo amaghi ihe bu nkowa nnochị ga-amata ya ebe a. Ndi mba ozo na-amu asusu Igbo ga-esi na nchocha a muta ka e si eme ndoko okwu nkowa nnochị. Ha ga-amatakwa oru nkowa nnochị na-aru n'ime ahiri okwu. Ndi na-aru oru nta akuko na oru nzirita ozi enweela uzo ohuru ha ga-esi na-abawanye ma na-atugwa ahiri okwu ederede ha. Ohere aputala maka ndi ga-acho iga n'ihu chee nchocha a ihu ebe ozo, iji bawanye mmuta gbasara nkowa nnochị. Nke kacha nke bu na asusu Igbo ga na-egori, n'ih i na onodu ya agbanweela site na nchocha a. o ga-esizi ebe a nwere mgbanwe oma di etu a na-aga n'ihu.

Edensibija

- Anagbogu, P.N., Mbah, B.M. na Eme, C.A. (2010). *Introduction to Linguistics*(2nd Edition). Awka: Amaka Dreams Ltd.
- Crystal, D. (1971). *Linguistics*. Great Britain: Hazell Watson and Viney Ltd.
- Crystal, D. (1991). *A Dictionary of Linguistics and Phonetics*. Oxford O4: Basil Blackwell Ltd.
- Crystal, D. (1992). *A Dictionary of Linguistics and Phonetics*. Oxford: Blackwell Publishers Ltd.
- De Saussure, F. (1916). *Course in General Linguistics*. Geneva: University of Geneva.
- Echibima, G. (2015). *A Textbook of Igbo Linguistics*. Owerri: Assumpta Press.
- Ekeulu, C.V. (2009). *Ntuziaka N'omumu Asusu, Agumagu, Omenaala Na Ewumewu Igbo Nke Ndi Sekondiri Ukwu Nke Mbu*. Yaba-Lagos: Kandu Publishing Company.
- Eleodimuo, A. (1988). *Apposition in Igbo*. Unpublished B.A. Project, UNILAG.
- Emenanjo, E.N. (1978). *Elements of Modern Igbo Grammar: A Descriptive Approach*. Ibadan University Press Ltd.
- Eyisi, J. (2006). *A Grammar of English: The Student's Companion*. Nimo: Reu Charles and Patrick Ltd.
- Ezeomeke, S.O. (2004). *Igodo Nghota Utoasusu Igbo*. Enugu: Easy-quality Press.
- Hodges, J.C. na Whitten, M.E. (1982). *Harbrace College Handbook*. New York:

Harcourt Brace Jovanovich, Inc.

- Murthy, J.D. (2007). *Contemporary English Grammar*. Lagos: Book Master.
- Ofilu, N.D., Chukwu, A.O. na Anozie, C.C. (2012). *Lingwistiiki Sayensi Asusu II*. Nsukka: Paschal Communications.
- Prasad, T. (2014). *A Course in Linguistics (2nd Edition)*. Delhi: PHI Learning Private Ltd.
- Quirk, R. na Greenbaum, S. (1973). *A University Grammar of English*. London: Longman.
- Quirk, R. na Greenbaum, S.(1981). *A University Grammar of English*. London: Longman Group Ltd.
- Quirk, R., Greenbaum, S., Leech, G. na Svartvik, J. (1985). *A Comprehensive Grammar of the English Language*. London: Longman.
- Trask, R.L. (1993). *A Dictionary of Grammatical Terms in Linguistics*. New York: Routledge
- Uba-Mgbemena, A. (2000). *Apposition in Igbo Syntax: A Syntactic and Semantic Study*. Vol.1. pp.20-28.
- Uba-Mgbemena, A. (2006). *Ntala Usoro Asusu Igbo*. Ibadan: Gold Press Ltd.
- Umeodinka, A.U. (2011). "Apposition in Igbo Syntax". Unpublished M.A. Thesis, UNN.
- Umeodinka, A.U., Ugochukwu, C.N., Ogwudile, E.C. na Ilechukwu, D.I. (2019). *Kpokoputo- asusu Na Ntughari*. Ibadan: Divine Press.
- Uwalaka, M.A.(1997). *Igbo Grammar*. Ibadan: The Pen Services.

Internet Sources

- <http://www.freedictionary.com> . Retrieved 19/06/2011.
- <http://grammar.about.com>. Retrieved on 19/05/2011.
- <http://en.wikipedia.org>. Retrieved on 27/07/2011.
- <https://www.thought.com> Retrieved Jan 25, (2018)